



Pikku-Finlandia event-center. Photo by Mikko Raskinen. Helsinki 02/2022.
Pikku-Finlandia



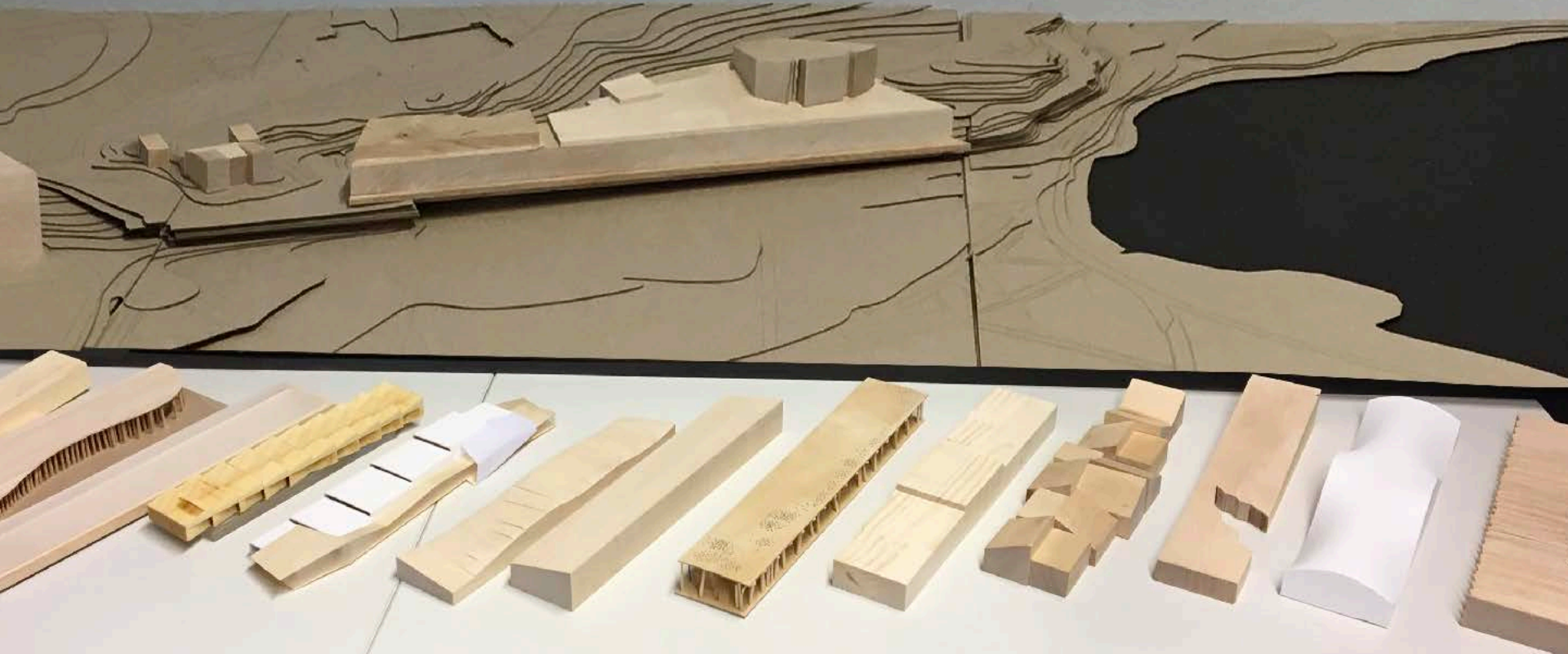
*Katve pavilion at Aalto University. Photo by Kimmo Räisänen. Helsinki, 06/2020.
Pikku-Finlandia*

A? Aalto-yliopisto
Aalto-universiteti

Jaakko Torvinen
Aalto University



*Finlandia Hall, photo Pete Laakso, 2018.
Pikku-Finlandia*



*Pikku-Finlandia studio held by Building Design and Wood Program at Aalto University, 10/2019.
Pikku-Finlandia*

*Jaakko Torvinen
Aalto University*

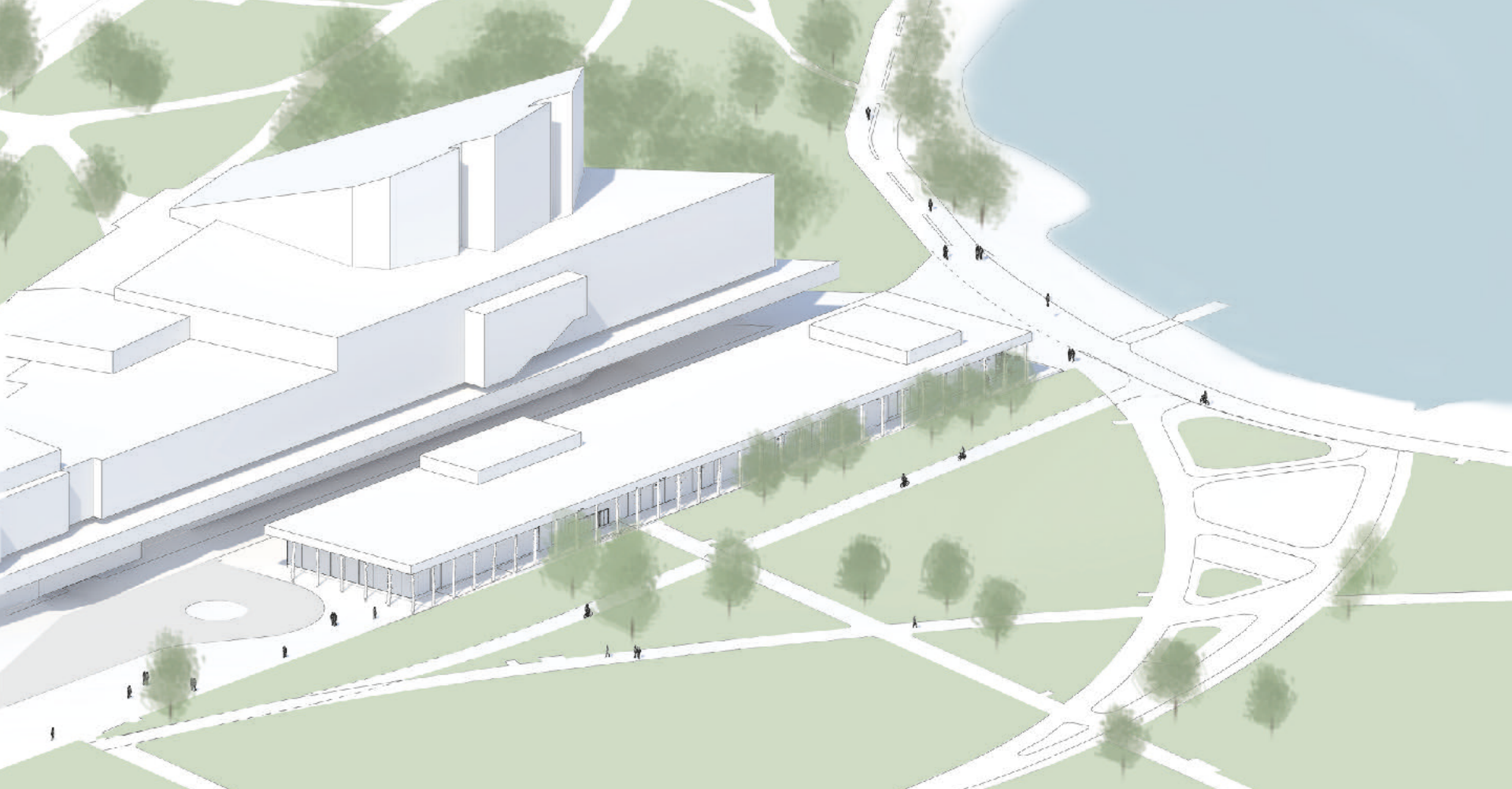


*Finlandia Forest proposal pastel painting by Jaakko Torvinen, 10/2019.
Pikku-Finlandia*

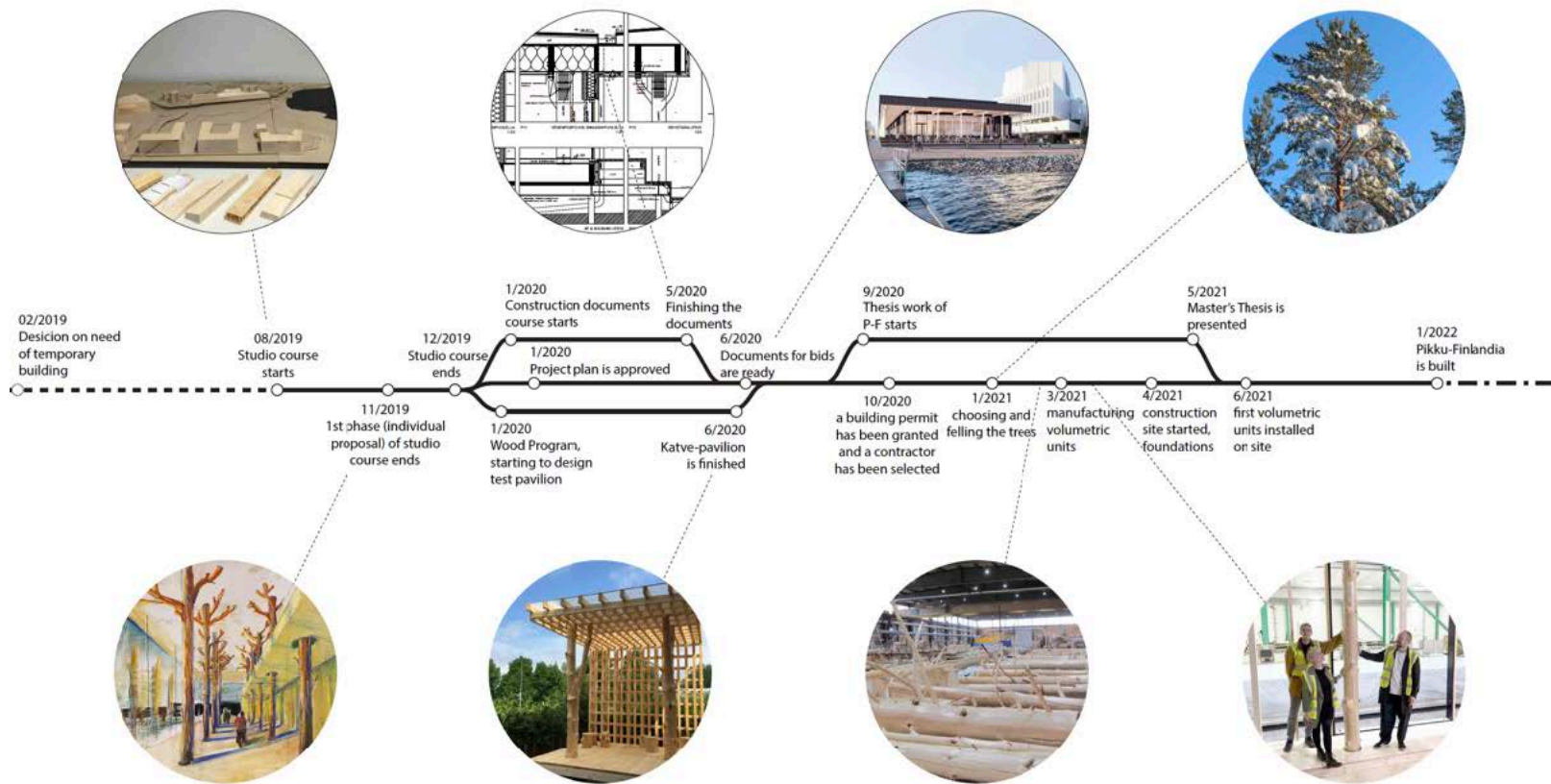


*Finlandia Forest proposal pastel painting by Jaakko Torvinen, 12/2019.
Pikku-Finlandia*

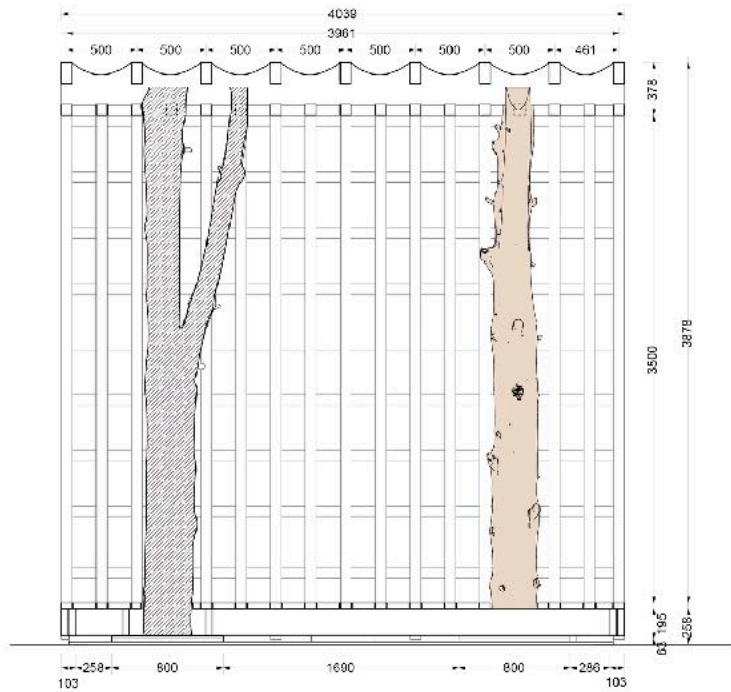
*Jaakko Torvinen
Aalto University*



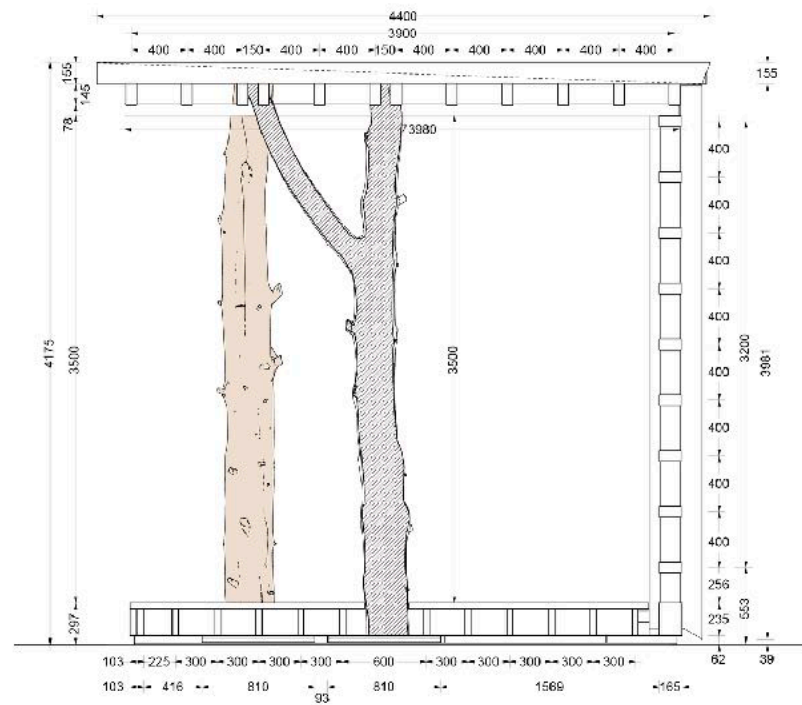
*Finlandia Forest proposal by Torvinen, Wendelin & Järvelä, 12/2019.
Pikku-Finlandia*



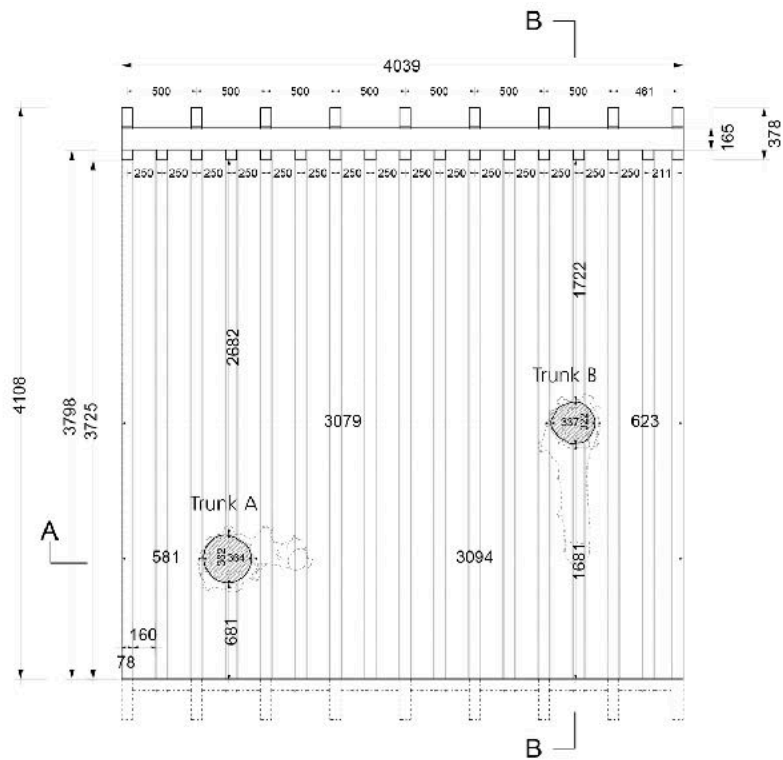
Timeline of Pikku-Finlandia project
 Pikku-Finlandia



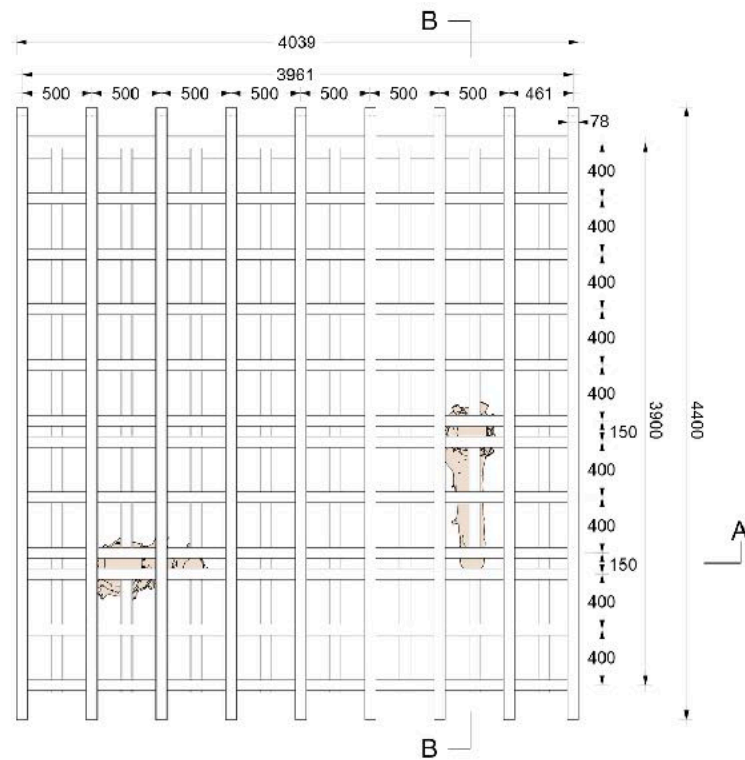
Section A



Section B



Floor plan



Roof plan



*Harvest and transport from Evo forest to Otaniemi. Aalto University Wood Program. 02/2020
Pikku-Finlandia*

*Jaakko Torvinen
Aalto University*



Harvest and transport from Evo forest to Otaniemi. Aalto University Wood Program. 02/2020
Pikku-Finlandia

Jaakko Torvinen
Aalto University



*Removal of bark with high-pressure washer. Aalto University Wood Program, 02/2020.
Pikku-Finlandia*

1



Natural
No treatment

2



One cut with
saw or using
wedges when
trunk starts to
crack



3



One straight
cut with
chainsaw

4



Multiple small
cuts with axe
or saw

OR

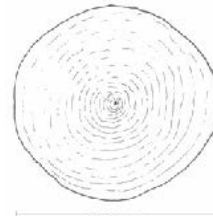


5



Multiple
shallow cuts
with circular
saw

Trunk cut 1



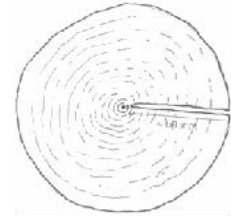
D = 150 mm

Trunk cut 2



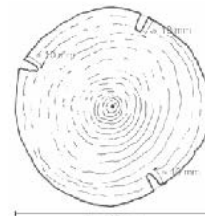
D = 165 mm

Trunk cut 3



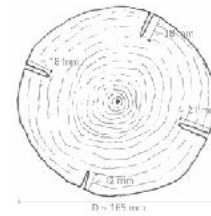
D = 180 mm

Trunk cut 4



D = 140 mm

Trunk cut 5



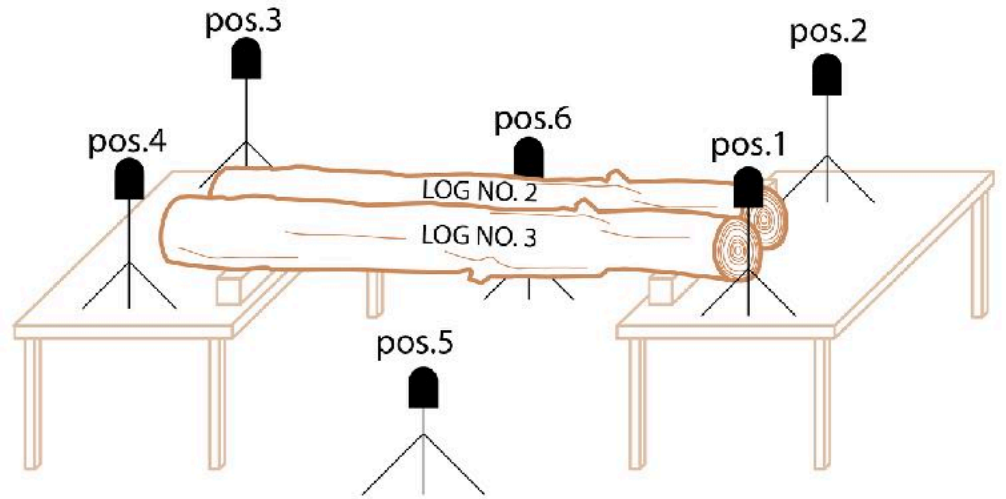
D = 165 mm

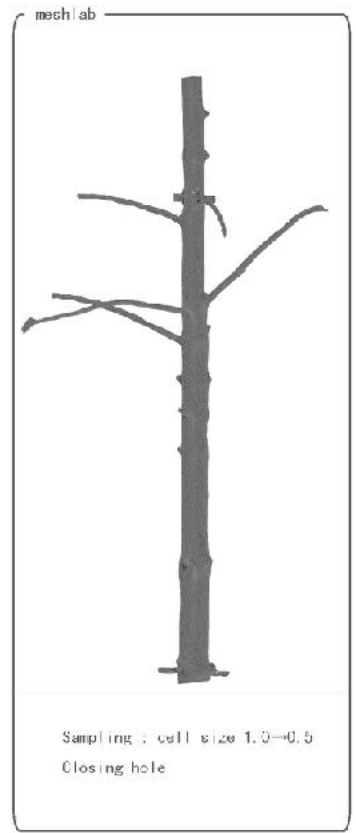
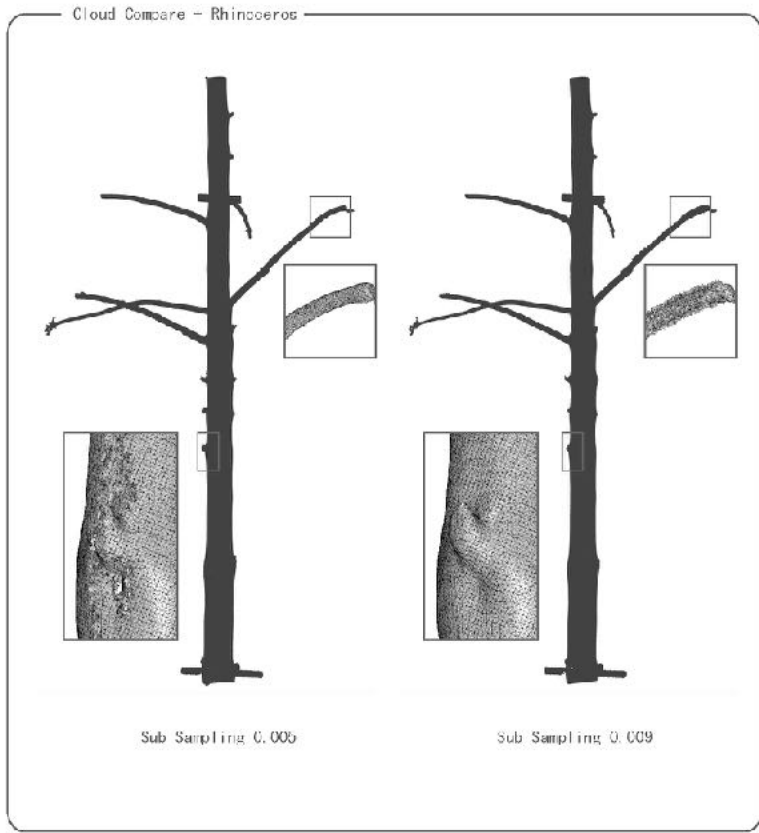
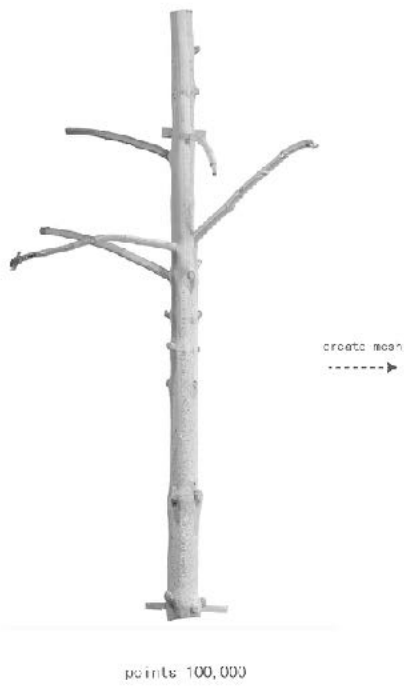




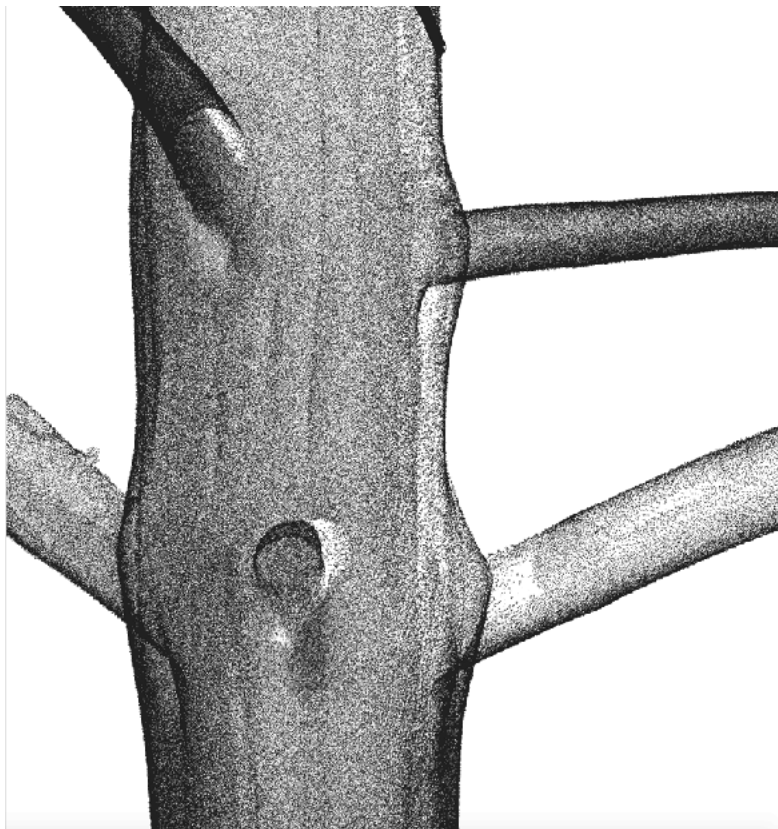
AV i
KERÄ
ALAYZ
KOHTA

Monitoring of trunks while drying. Aalto University Wood Program, 2020.
Pikku-Finlandia





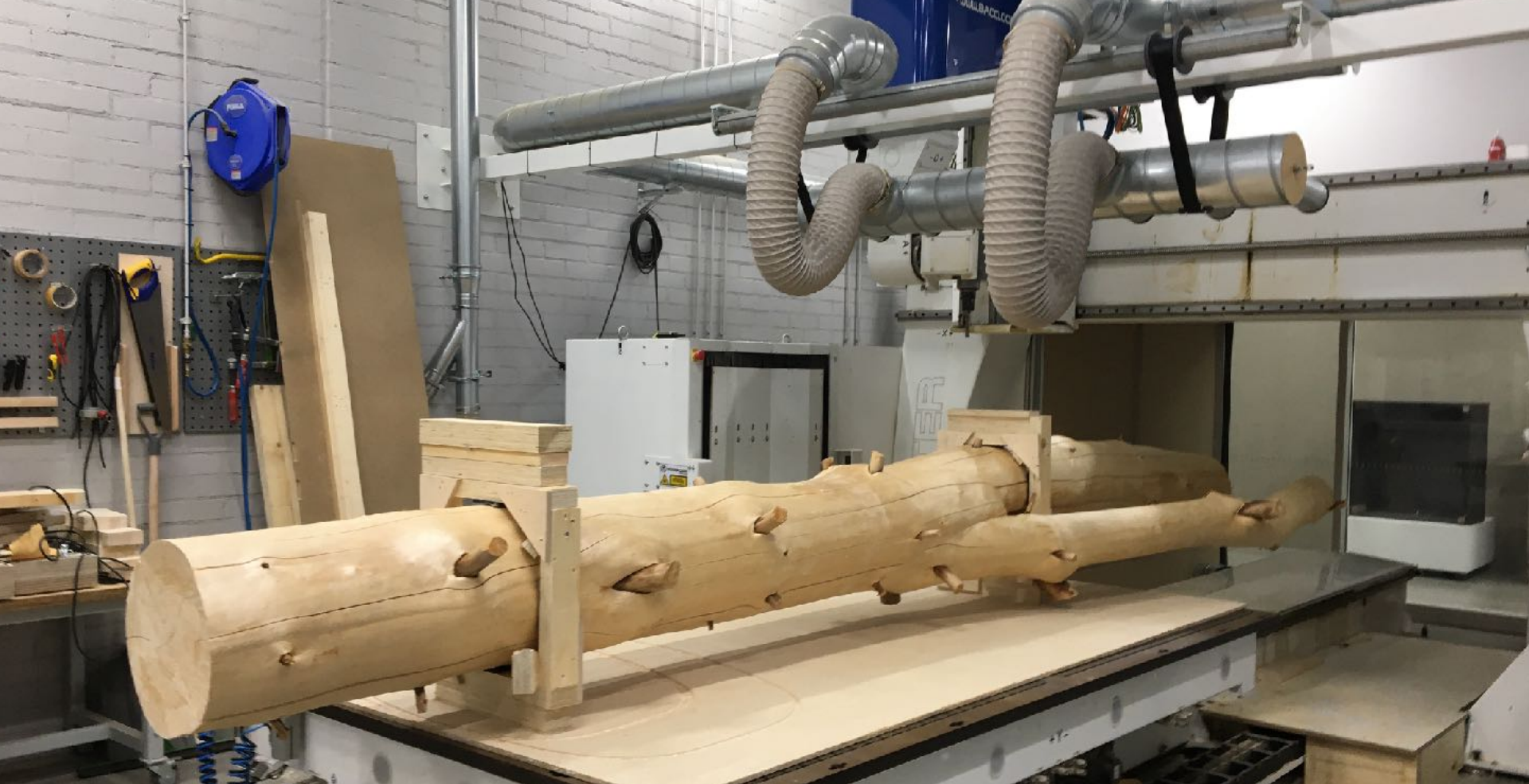
Translation of 3-d point cloud scan to NURBS mesh by Juho-Pekka Virtanen, Aalto University, 2020.
Pikku-Finlandia



Translation of 3-d point cloud scan to NURBS mesh by Juho-Pekka Virtanen, Aalto University, 2020.

Pikku-Finlandia

*Jaakko Torvinen
Aalto University*



Roof connections, fabricated with a 5-axis NC router. Aalto University Wood Program, 05/2020.

Pikku-Finlandia

*Jaakko Torvinen
Aalto University*



Roof connections, fabricated with a 5-axis NC router. Aalto University Wood Program, 05/2020.

Pikku-Finlandia

*Jaakko Torvinen
Aalto University*

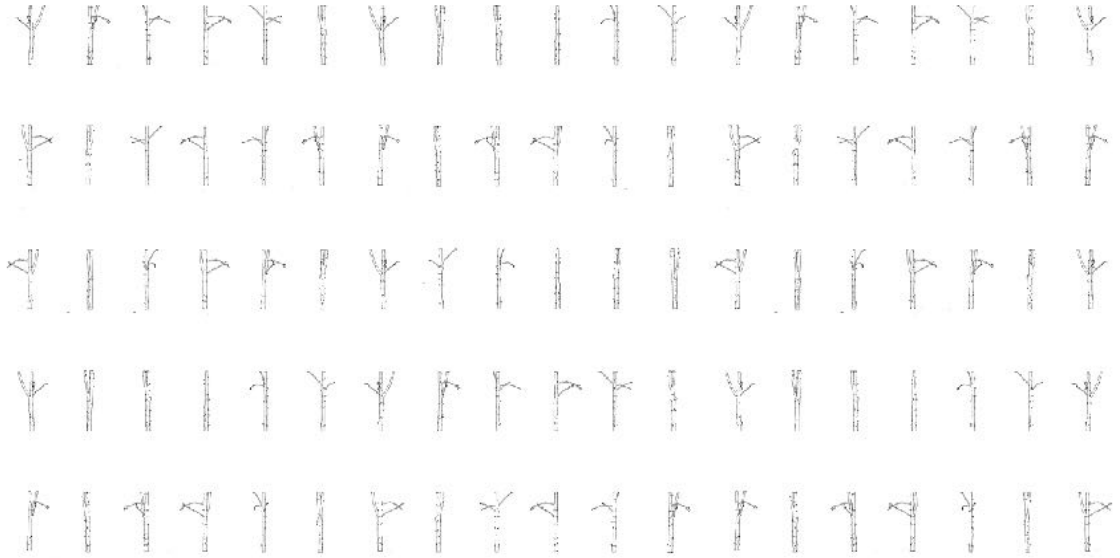
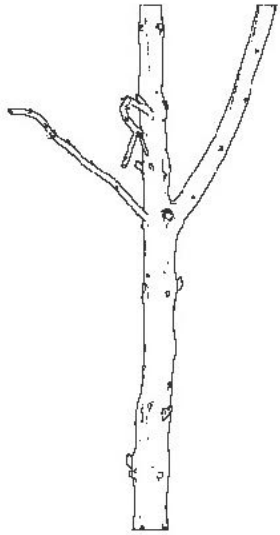


*Katve pavilion at Aalto University. Photo by Kimmo Räisänen. Helsinki, 06/2020.
Pikku-Finlandia*

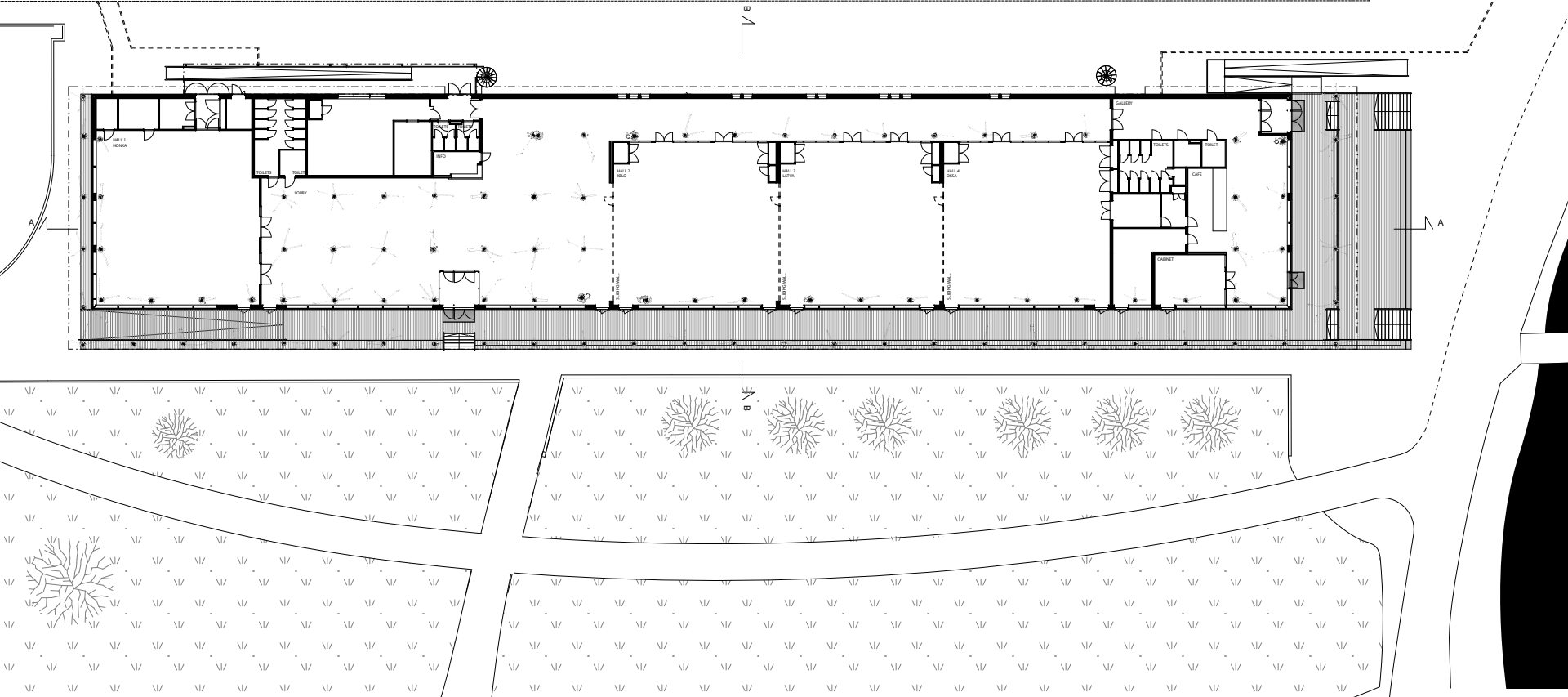


*Katve pavilion at Aalto University. Photo Jaakko Torvinen. Helsinki, 06/2020.
Pikku-Finlandia*

*Jaakko Torvinen
Aalto University*



Two trees for Katve pavilion and 95 trees for Pikku-Finlandia.
Pikku-Finlandia



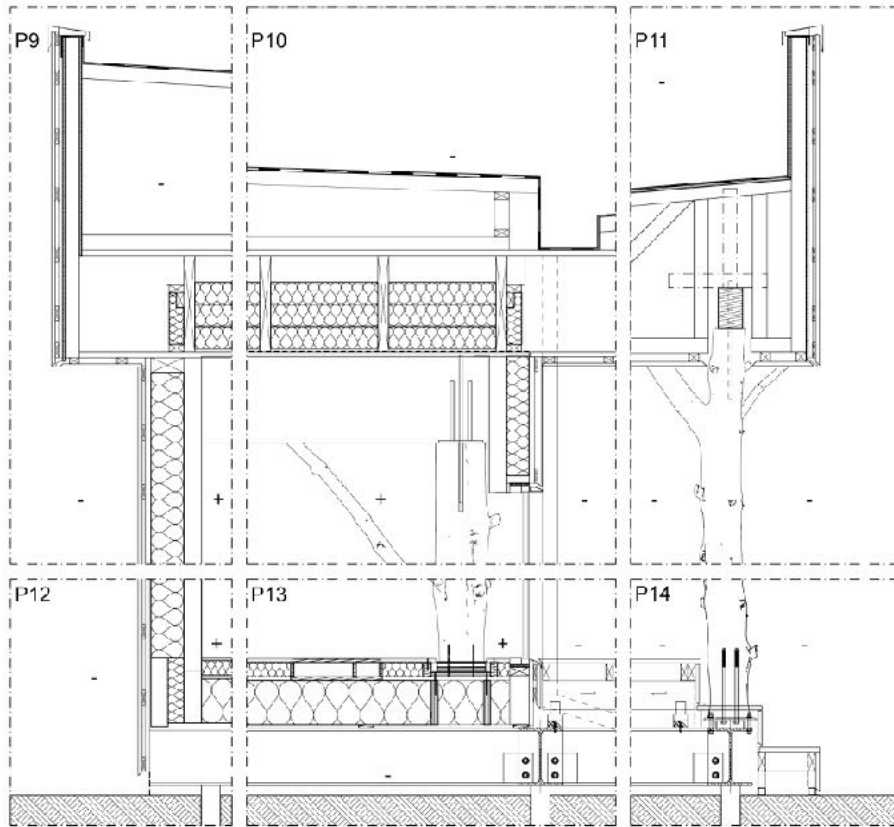
TORVINEN
 JÄRVELÄ
 WENDELIN
 PIKKU - FINLANDIA STUDIO
 ARKITEHDIT **TRT A!**

1 KRS



*Pikku Finlandia first floor plan.
 Pikku-Finlandia*

*Jaakko Torvinen
 Aalto University*

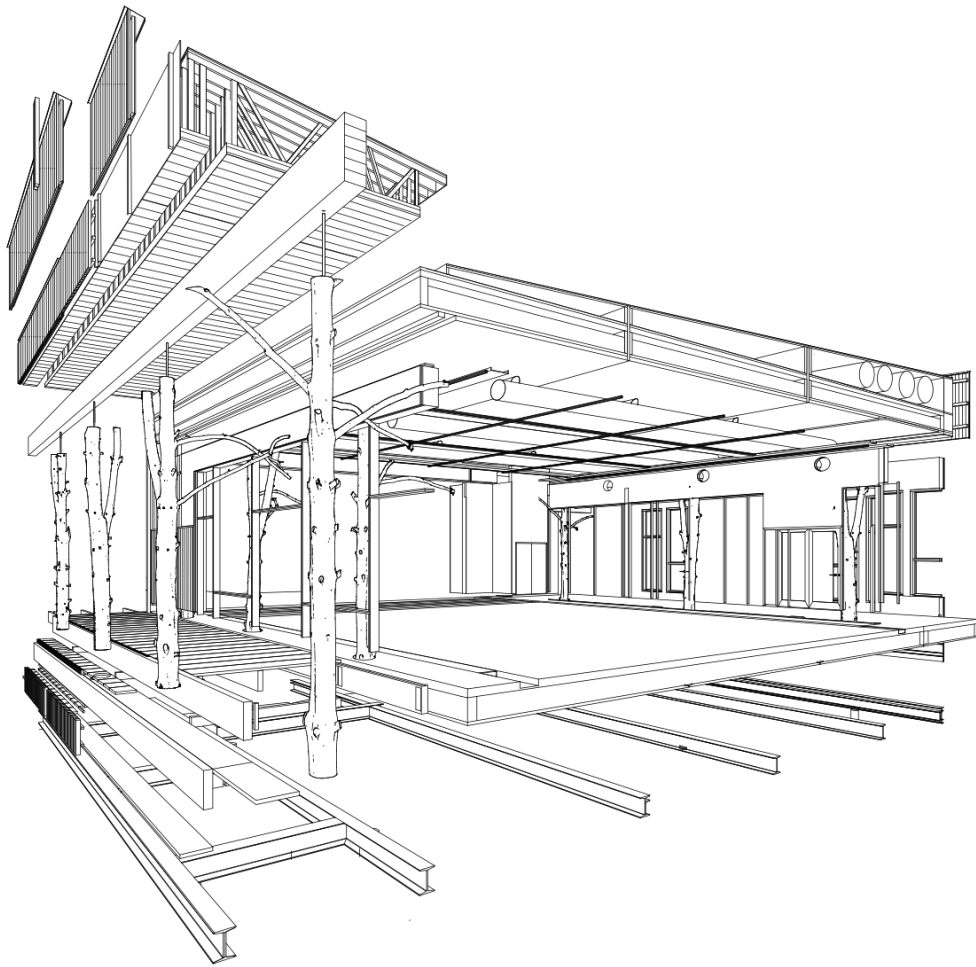


*Pikku Finlandia partial cross section. Drawing by Torvinen, Järvelä, Wendelin, 2022.
Pikku-Finlandia*



*Pikku Finlandia long facade and section. Drawing by Jaakko Torvinen.
 Pikku-Finlandia*

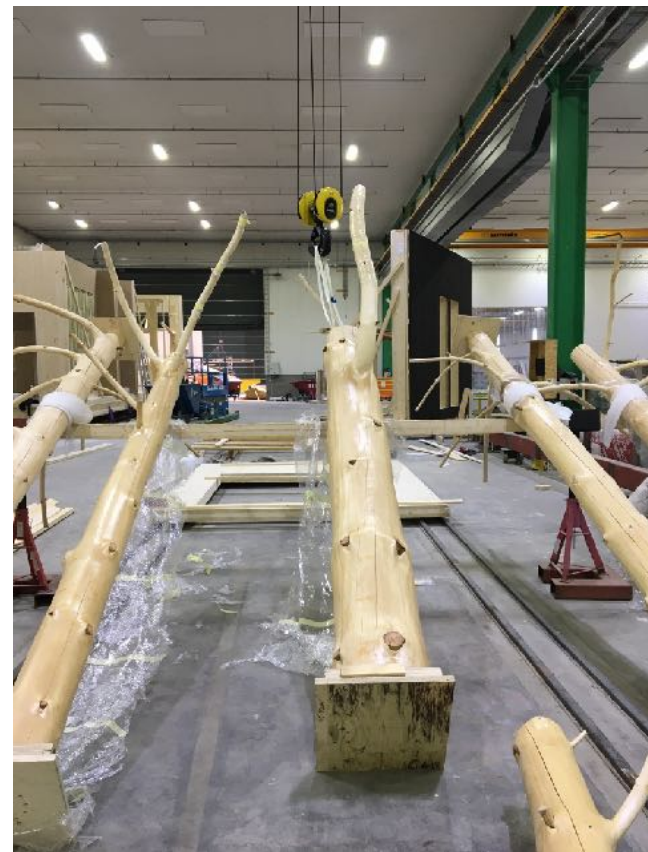
*Jaakko Torvinen
 Aalto University*



*Pikku-Finland structural system. Drawing by Jaakko Torvinen.
Pikku-Finland*



*Tree-columns were crafted to correct length at Timberpoint with Hundegger PBA2. Loviisa, 02/2021.
Pikku-Finlandia*



*Tree-columns were pre-installed in volumetric modules by FM Haus. Jokioinen, 04/2021.
Pikku-Finlandia*



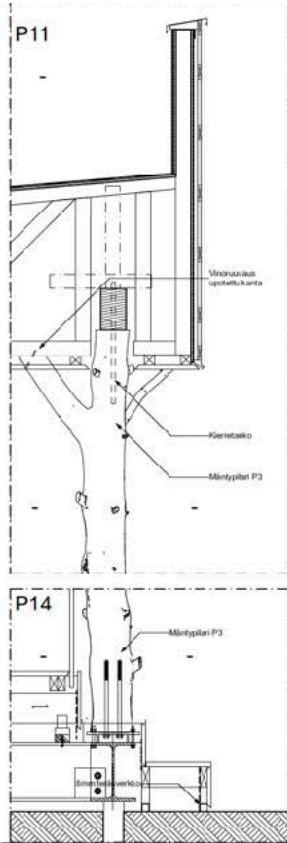
*Prefabricated modules were transported to site. Helsinki, 05/2021.
Pikku-Finlandia*



*GL beams were installed on site. Helsinki, 06/2021.
Pikku-Finlandia*



*Roof elements were installed on site. Helsinki, 06/2021.
Pikku-Finlandia*



Columns which were not pre-installed in the volume elements were installed on site. Helsinki, 08/2021.
Pikku-Finlandia



Pikku-Finlandia's colonnade. Photo Mikael Linden. Helsinki, 05/2022.
Pikku-Finlandia



*Pikku-Finlandia. Photo by Kimmo Räisänen. Helsinki 05/2022.
Pikku-Finlandia*



*Pikku-Finlandia. Photo by Kimmo Räisänen. Helsinki 05/2022.
Pikku-Finlandia*



Pikku-Finlandia. Photo by Mikael Linden. Helsinki 05/2022.

Architects: Jaakko Torvinen, Elli Wendelin, Havu Järvelä in collaboration with Pekka Heikkinen and Architects NRT

Pikku-Finlandia

*Jaakko Torvinen
Aalto University*



Pikku-Finlandia. Photo by Mikael Linden. Helsinki 07/2022.

*Architects: Jaakko Torvinen, Elli Wendelin, Havu Järvelä in collaboration with Pekka Heikkinen and Architects NRT
Pikku-Finlandia*

*Jaakko Torvinen
Aalto University*



Pikku-Finlandia. Photo by Mikael Linden. Helsinki 07/2022.

*Architects: Jaakko Torvinen, Elli Wendelin, Havu Järvelä in collaboration with Pekka Heikkinen and Architects NRT
Pikku-Finlandia*

*Jaakko Torvinen
Aalto University*

JAAKKO TORVINEN

Arkkitehti, SAFA

Yliopisto-opettaja
Wood Program
Aalto-yliopisto

jaakko.torvinen@aalto.fi
+358 40 186 2383

LinkedIn: jaakkotorvinen
Instagram: jaakko_torvinen

www.jaakkotorvinen.com

